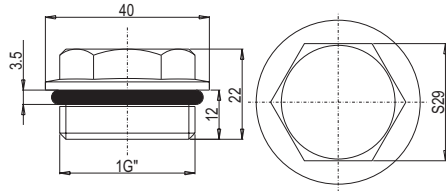


## Plug for manifolds

Model: B6-12 stop end, each set needs 2 pieces.  
 Pre-assembling on manifolds, it can adjust to left inlet or right inlet when mounting at work site.  
 It has rubber O-ring with self-sealing that is easy to dismounting.

Size:(mm)



## Order information

### B6...Selected table

Model	Specification	Length
B602	2 lood with built-in balance valve double regulation	150
B603	3 lood with built-in balance valve double regulation	200
B604	4 lood with built-in balance valve double regulation	250
B605	5 lood with built-in balance valve double regulation	300
B606	6 lood with built-in balance valve double regulation	350
B607	7 lood with built-in balance valve double regulation	400
B608	8 lood with built-in balance valve double regulation	450
B609	9 lood with built-in balance valve double regulation	500
B610	10 lood with built-in balance valve double regulation	550

Each B6...Manifolds set with below accessories:

2pcs B6-11 small manual discharge valve with air-vent and drain valve

2pcs B6-12 end plugs

Each lood has 4pcs aluminium labels(For example:B605 has 20pcs labels)

1pcs info. lable

Attention when ordering:

- Pipe adaptor and brackets are not included in manifolds which need additional order.
- 2 brackets are enough for 10 loods(or less than 10loods)

## B6...Stainless Steel Manifold



Intelligent  
 Built-in balancing valves double regulation

### Description and feature

Composed of flow manifold and return manifold

The flow manifold is connect with inlet of heating source water system, and the built-in shut off valve can adjust the whole system flow of static balance.

The return manifold is connect with return water of heating system, and built-in adjustable valve which can manual open it or close the branch of floor heating.

If need individual room temperature controlling, you can move off the manual adjuster, then mounted the electro-thermal actuator, and that will be controlled by the room thermostat automatic

The small manual discharge valve with drain valve and air vent in one. Main pipe, branch pipe and spool adopt the (O-ring) static seal

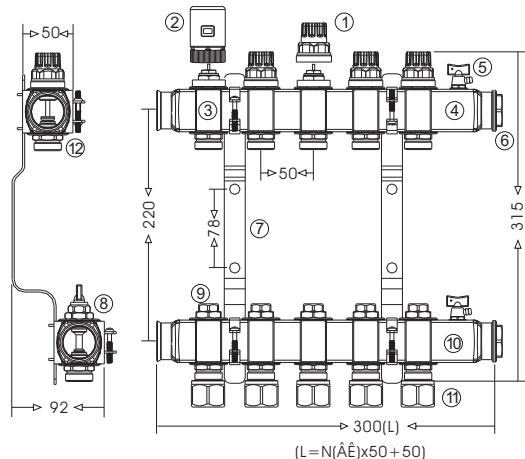
Choose the splitting pipe adaptor need to according to the floor heating pipes size, the pipe adaptor is hard sealing

Main pipe is 13cm<sup>2</sup> wich is equal to DN 40 pipe internal DN area

## Parameter

Material :Main pipe is stainless steel 304,pipe adaptor is 59#brass  
 Pressure:PN10  
 Medium temperature:1...95°C  
 DN: The sectional area is 13cm<sup>2</sup>  
 Branch pipe distance:50mm  
 Valve interface:1" Internal threaded valve

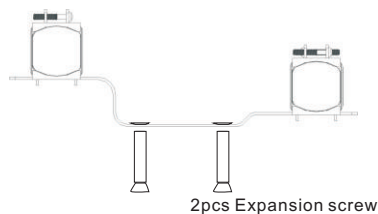
Size and parts:mm



- |                   |   |                                 |
|-------------------|---|---------------------------------|
| ① Manual adjuster | ② Actuator  | ③ Labels                        |
| ④ Return manifold | ⑤ Manual discharge valve with draining and air-vent | ⑥ Stop end                      |
| ⑦ Bracket         | ⑧ Built-in static flow balancing valve              | ⑨ Hexagon metal adjuster        |
| ⑩ Flow manifold   | ⑪ Hard sealing pipe connection                      | ⑫ Branch built-in control valve |

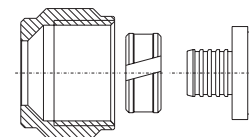
## Mounting bracket

Model:B610,nickel plated iron  
 The bracket is not included in manifolds that need a additional order



## Plastic pipe adaptor connection (additional order)

Hard sealing connection,avoiding leakage



Nickel plated

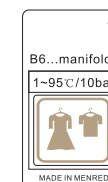
Model :B6-1216,Pipe internal diameter is 12mm,external diameter is 16mm  
 B6-1620,Pipe internal diameter is 16mm,external diameter is 20mm

Barss finish

Model :H108,Pipe internal diameter is 12mm,external diameter is 16mm  
 H109,Pipe internal diameter is 16mm,external diameter is 20mm

## Aluminum label and info.label

According to the room function of floor heating return manifold to stick the right info.label,which is easier to mounting,adusting and maintaining the floor heating system .Each set of manifolds include the aluminum label and info.label.



Aluminum labe B6-131



Info.label B6-14

## Draining and air vent valve

Model: B6-11  
 Compact design of draining and air vent valve which is pre-assembling at the end of manifolds at factory.

Size:mm

