

E8.4..RF Wireless receiver

One to one wireless receiver with individual and adjustable limit temperature control circuit, which is applied to control the electric heating devices or on/off valve actuator used in hydronic floor heating.

Selection Table

Model	Current	Output type
E8.413RF	3A	One receiver, built-in & floor sensor
E8.423RF	3A	One receiver, built-in & floor sensor, with potential free output
E8.416RF	16A	One receiver, built-in & floor sensor

Parameter

Voltage: Ref. to table

Power Consumption: 2w

Wireless Frequency Output: 433MHz

Effective Transmission Distance: 200m empty space

External Limitation Value: 30, 40, 55°C adjustable

Factory Setting: 30°C

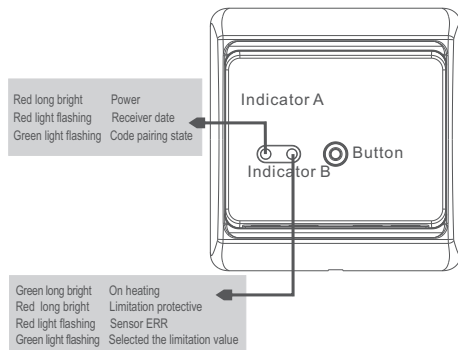
Limitation Switch Differential: -2°C

Ambient Temperature: -5~50°C

Protective Housing: Ip20

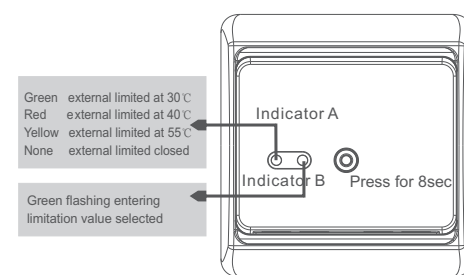
Housing Material: Anti-flammable PC

Description of work state



The indicator A is red when in power on
 The indicator A is red and flashing when receiving the wireless data
 The indicator A is green and flashing then entering the code pairing
 The indicator B is green when on heating
 The indicator B is red when set the external limitation protective
 The indicator B red flashing shows the sensor Err
 The indicator B green flashing shows entering the external limitation value select

Limitation value selected



Press the button for 8sec till the indicator B green light flashing when in power on, that means entering the external limitation selected, Indicator A green shows external limited at 30°C, Indicator A red shows external limited at 40°C, Indicator A yellow shows external limited in 55°C, Indicator A without light shows the external limitation closed. Press the button softly and cycle selected in these four states. It will save the current setting automatically without pressing for 8sec and quit the limitation value set.

Code pairing method

Press the button for 5sec then release, indicator A green and flashing, entering the code pairing state. Code pairing successfully then quit immediately to the work mode. It will quit the code pairing state without operation in 30sec.



Press the menu key to enter the advanced setting when in power off, press the menu key again till enter the fifth item code pairing, press + and - key to start code pairing. Modify the transmission power in the sixth item, the number more larger the transmission power more higher.



5 COD Start to code pairing
 Press + or - key to start to code pairing with the receiver
 LCD display -- symbol flash 3 times

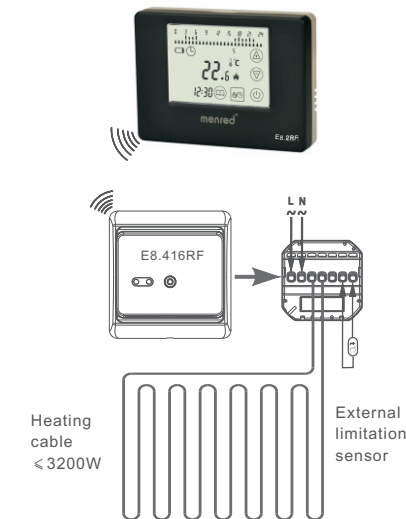


6 PA Select the wireless transmission power
 Press + or - key to modify the power
 Set range: 0-3, 0 is Min, 3 is Max.
 Press off key to quit the advanced setting.

Instruction

Application I:

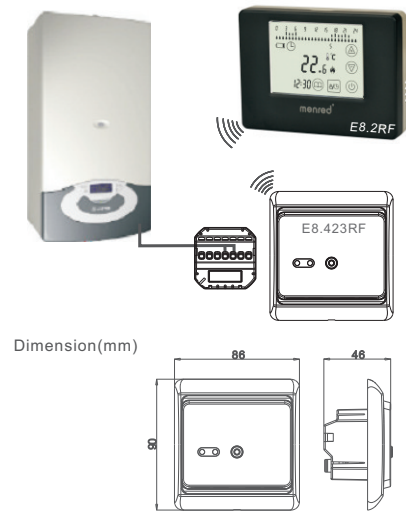
Apply to wireless control for heating cable



E8.4..RF Wireless receiver

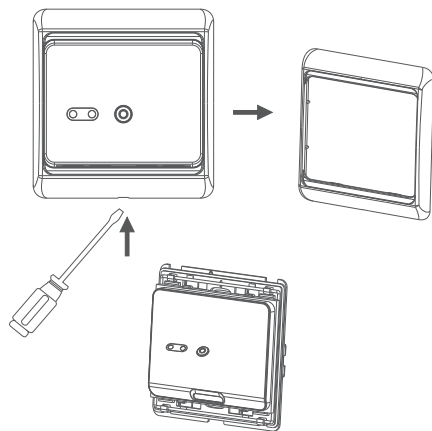
Application II:

Apply to boiler wireless control

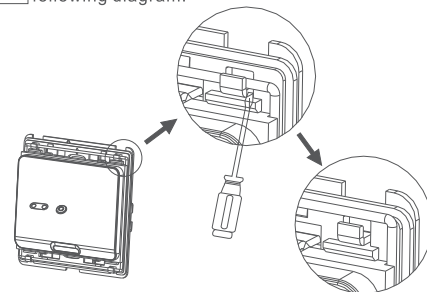


Mounting Steps:

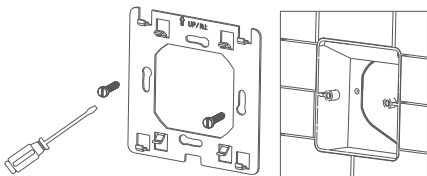
1 Release the front cover by inserting a screwdriver into bottom crack.



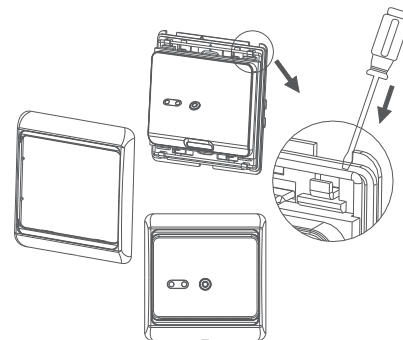
2 Take the backing plate apart according to the following diagram.



3 Mounted the backing plate in the wall socket by screwdriver.



4 After connect wires(see right diagram), the thermostat mounte on the backing plate and remounted the cover and frame.



Connecting Diagram

Attention:

The thermostat which connect the electric heating device is apply to full load(3200W) heating cable in 2500m height above sea level,and the rated power of external load should be less than or equal to 80%rated power thermostat when in the 2500m to 4200m height.

Instruction

